



 1  1  1  D

Ancaster Court, Bexhill, TN40 2FS
£900 Per Calendar Month Per



Oliver & Bailey

01424 834000 | 01424 533 555

Info@oliverbaileylettings.co.uk
www.oliverbaileylettings.co.uk

Entrance Hallway

Living Room

Kitchen

Bedroom

Shower Room



Furnished Options: Unfurnished

Council Tax Band: A

Available Date: 30th August 2026

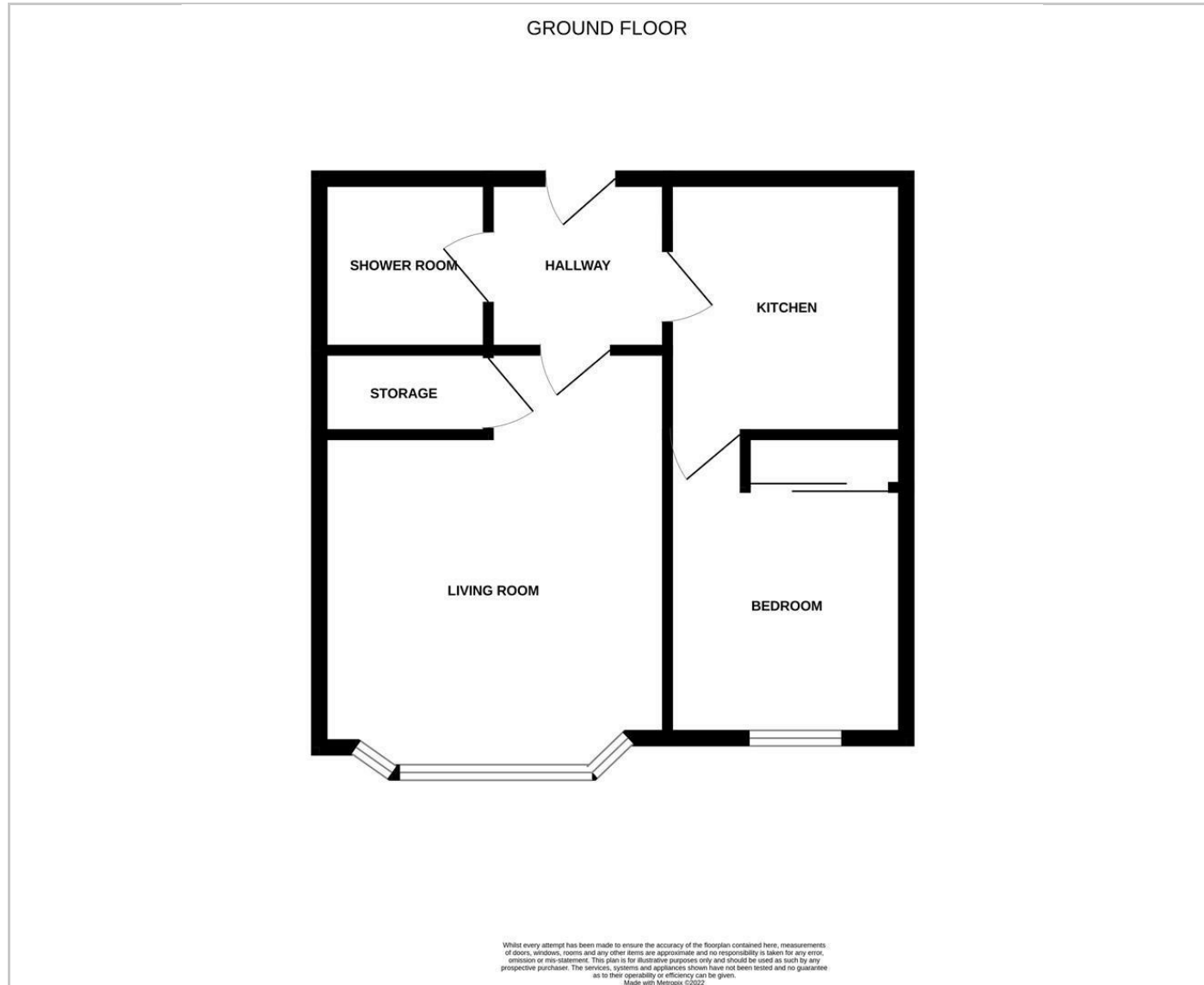
Oliver & Bailey

MODERN GROUND FLOOR APARTMENT... Call Georgia or Robyn at Oliver & Bailey to view this well presented one bedroom ground floor apartment.

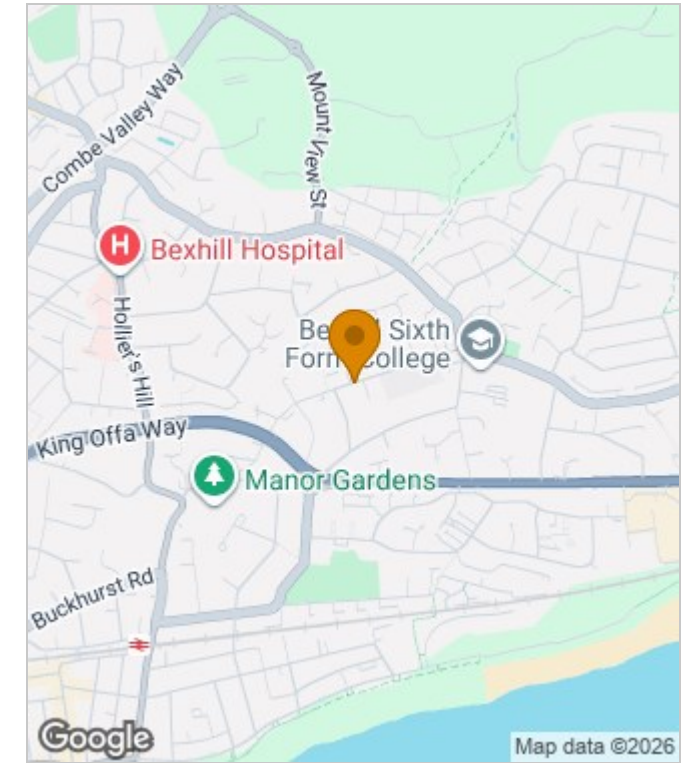
Located in Bexhill on Sea, the property is a short distance to the Town Centre, and walking distance to bus routes. The property has been finished to a high standard throughout and comprises from an high gloss kitchen with integrated appliances to include, washing machine, fridge/freezer and oven/hob. There is a good sized living room, double bedroom with built in wardrobes and shower room.

Further benefits to the property are double glazed windows.

FLOORPLAN



AREA MAP



Energy Efficiency Rating		Current	Potential
Very energy efficient - lower running costs			
(92 plus) A			
(81-91) B			
(69-80) C			
(55-68) D			
(39-54) E		57	57
(21-38) F			
(1-20) G			
Not energy efficient - higher running costs			
England & Wales		EU Directive 2002/91/EC	

Environmental Impact (CO ₂) Rating		Current	Potential
Very environmentally friendly - lower CO ₂ emissions			
(92 plus) A			
(81-91) B			
(69-80) C			
(55-68) D			
(39-54) E			
(21-38) F			
(1-20) G			
Not environmentally friendly - higher CO ₂ emissions			
England & Wales		EU Directive 2002/91/EC	

These particulars, whilst believed to be accurate are set out as a general outline only for guidance and do not constitute any part of an offer or contract. Intending purchasers should not rely on them as statements of representation of fact, but must satisfy themselves by inspection or otherwise as to their accuracy. No person in this firm's employment has the authority to make or give any representation or warranty in respect of the property.